

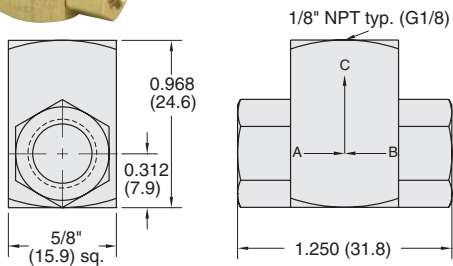


# SHUTTLE VALVES

## Poppet Type Shuttle Valves



Brass body, Delrin Poppet,  
Buna-N seal



**Medium:** Air, Water or Oil

**Input Pressure:** 300 psig/21 bar - air; 1,000 psig/70 bar - hydraulic

**Air Flow:** 14 scfm @ 50 psig; 26 scfm @ 100 psig; 630 l/min @ 6 bar

**Mounting:** Direct or in-line

**Operation:** Flow from "A" to "C" or "B" to "C"

**Pressure to Shift:** 1/2 psig approx.



**Note:** Shuttle valves should not be used as a pressure selector

**Part No. Description**

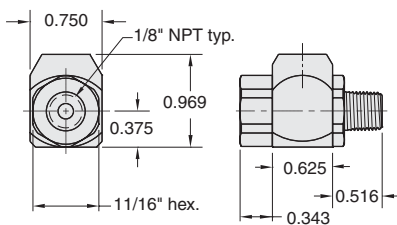
**MJSV-1 . . . . Poppet Shuttle Valve, 1/8" NPT**

**MJSV-1-MG . Poppet Shuttle Valve, G1/8**

## J-Series Shuttle Valves



**Part No.**  
**ISV-2PFF**



Poppet type shuttle  
(double check) valve.  
Brass body, stainless  
steel shuttle, Buna-N  
seal

**Medium:** Air, Water or Oil

**Input Pressure:** 300 psig max.

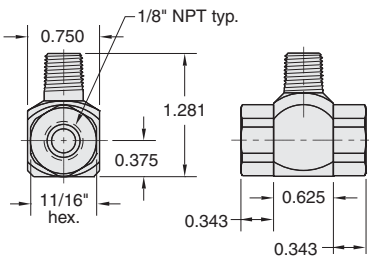
**Air Flow:** 30 scfm @ 50 psig  
50 scfm @ 100 psig

**Mounting:** Direct or in-line

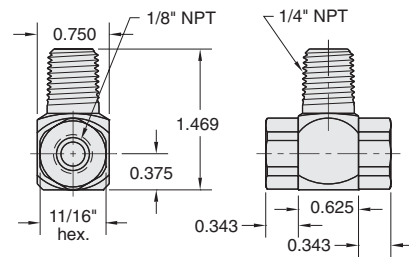
**Pressure to Shift:** 1 psig approx.



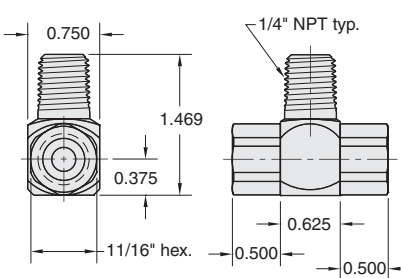
**Part No.**  
**ISV-2PFF**



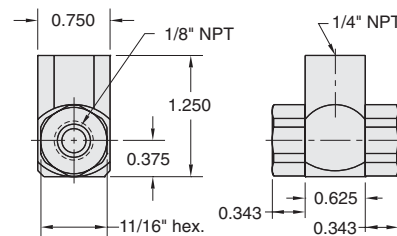
**Part No.**  
**ISV-2WFF**



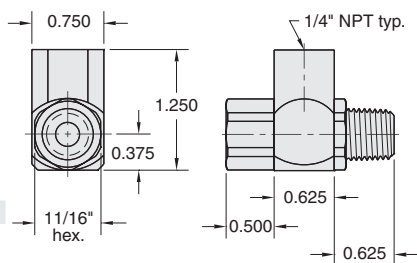
**Part No.**  
**ISV-2WYY**



**Part No.**  
**ISV-2YFF**



**Part No.**  
**ISV-2YYW**



**Part No.**  
**ISV-2YYY**

